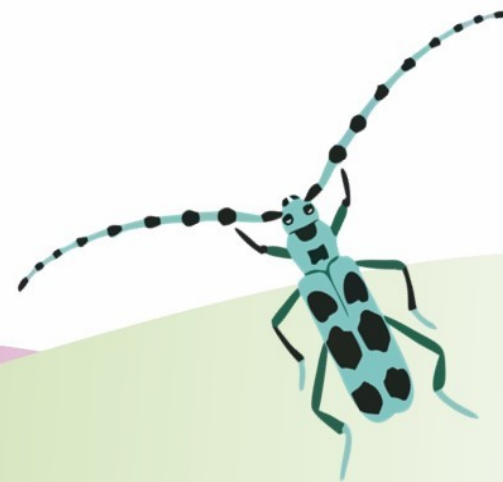


LIFE17 ESC/IT/001 "360 volunteers for monitoring forest biodiversity in the Italian Natura 2000 Network"

Workshop europeo "Volontariato per la conservazione di specie e habitat protetti"

S4 Monitoring protocols

Matteo Ruocco - D.R.E.A.m. Italia



22 GIUGNO 2022

Centro di Selezione Equestre "Galeone"
Reparto Carabinieri Biodiversità di Martina Franca (TA)

OPEN QUESTIONS

How to adapt the national monitoring protocols to the experience of the involvement of volunteers?

How to best integrate the necessary experience of qualified technicians with the volunteer workforce?

How to make standardized and therefore repetitive protocols attractive?



LIFE ESC360

3 years

345 volunteers

8 monitoring shifts

6 study areas

50 monitoring targets



NATURA 2000

24 N2K sites



MONITORING TARGETS

Plant species (3)

Iris marsica

Adonis distorta

Himantoglossum adriaticum

Habitats (8)

Habitat 4060 (Lande alpine e boreali)

Habitat 6210 (Formazioni erbose secche seminaturali e facies coperte da cespugli su substrato calcareo)

Habitat 9210* (Faggete appenniniche con tasso e agrifoglio)

Habitat 5130 (Formazioni a *Juniperus communis* su lande o prati calcicoli)

Habitat 6170 (Formazioni erbose calcicole alpine e subalpine)

Habitat 6230* (Formazioni erbose di nardo)

Habitat 8240 (Pavimenti calcarei)

Habitat 8130 (Ghiaioni del Mediterraneo occidentale e termofili)

Amphibians and reptiles (13)

Bufo viridis complex

Pelophylax lessonae, P. kl. Esculentus

Rana temporaria

Rana dalmatina

Rana italica

Rana latastei

Hyla intermedia complex

Speleomantes italicus

Salamandrina perspicillata

Triturus carnifex

Insects (7)

Osmoderma eremita

Lucanus cervus

Cerambyx cerdo

Rosalia alpina

Morimus asper/funereus

Zerynthia polyxena

Parnassius mnemosyne

Mammals (3)

Ursus arctos marsicanus

Canis lupus

Felis silvestris



STANDARD METHODS



LIFE11 NAT/IT/000252



ISPRA

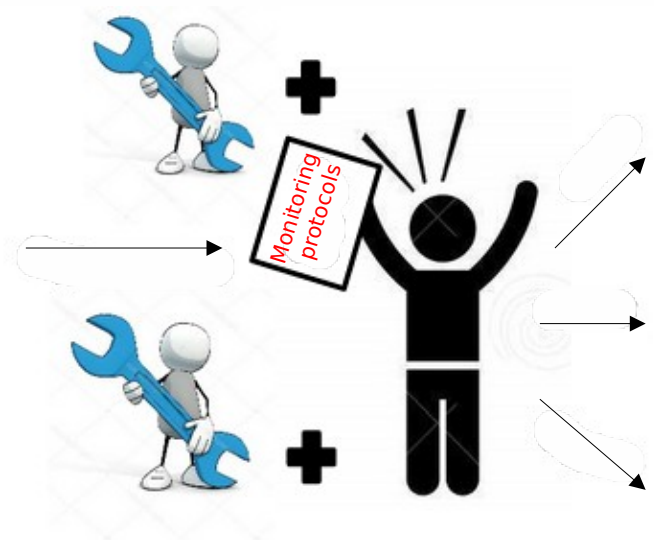
Istituto Superiore per la Protezione e la Ricerca Ambientale



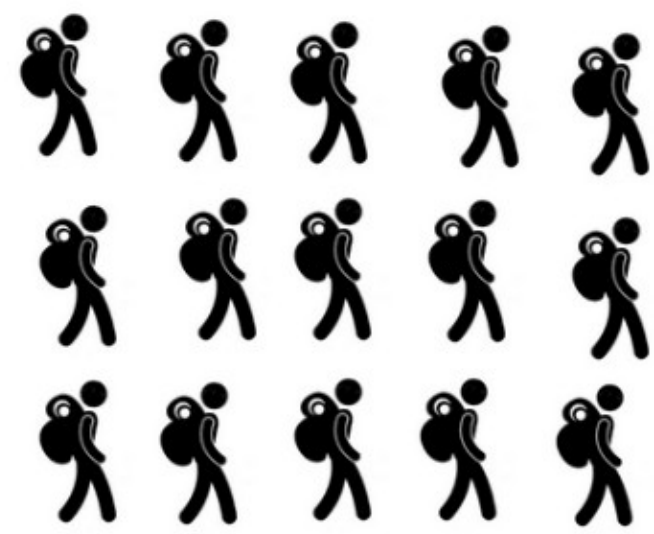
WORKFLOW



Monitoring protocols adaptation



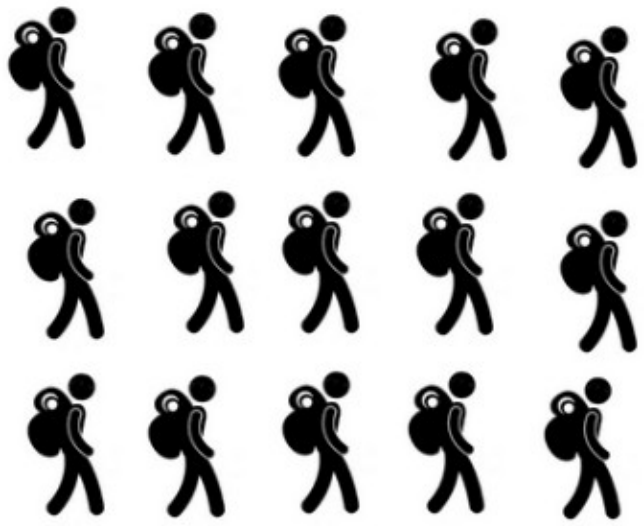
Tutor
Field assistant



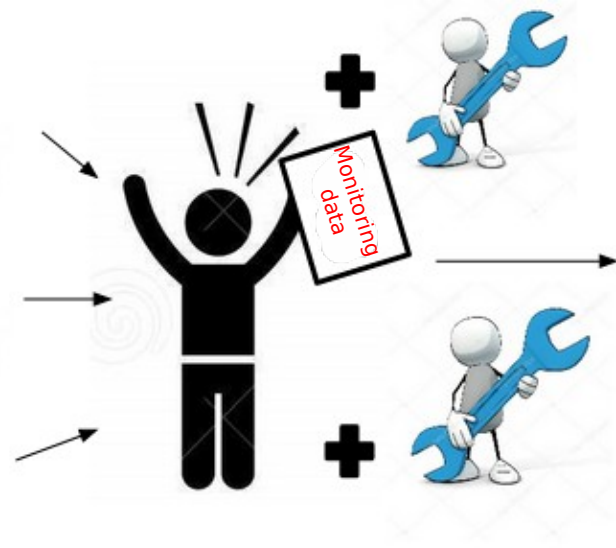
Volunteers
Field activities



WORKFLOW



Data collection



Data processing and validation



On-line database



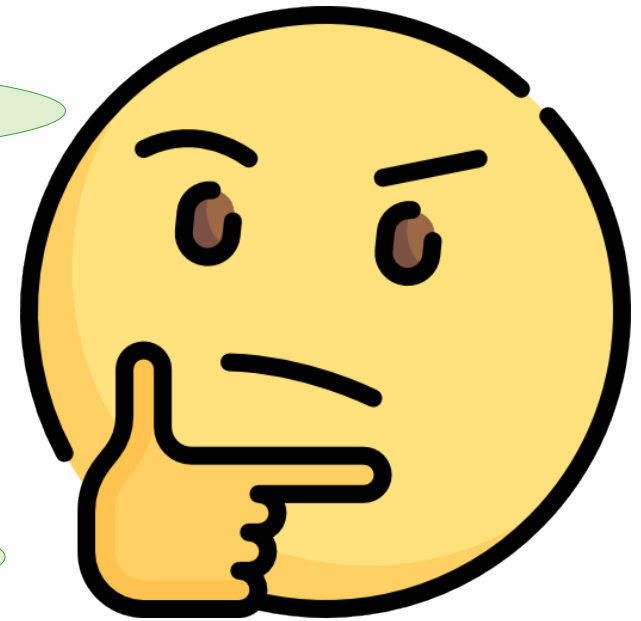
OPEN QUESTIONS

How to adapt the national monitoring protocols to the experience of the involvement of volunteers?

Simplify the methodology as much as possible

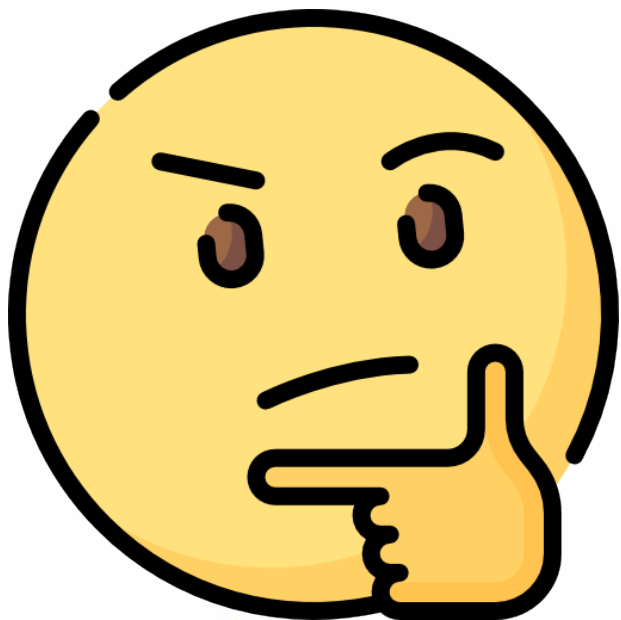
Big investment in training

Minimize the manipulation of species



OPEN QUESTIONS

How to best integrate the necessary experience of qualified technicians with the volunteer workforce?



Volunteers always supported by qualified technical staff (tutors)



OPEN QUESTIONS

How to make standardized and therefore repetitive protocols attractive?

Schedule diversified weekly activities

